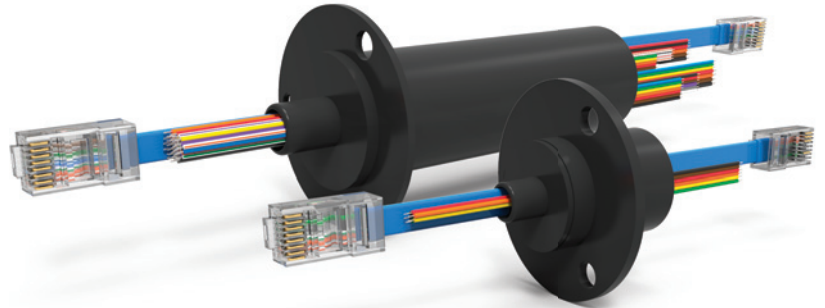


ESE Series: Overview

- + High-Quality Gold-on-Gold Contacts
- + Compact Capsule Design
- + Splash Seals for Dust and Moisture
- + Fully Compliant With IEEE 802.3 Formats
- + 100Base-T / 1000Base-T Ethernet Cable
- + T568B Wiring Terminated With RJ45 Connectors
- + Transfers Analog and Digital Signals
- + Low Electrical Noise
- + Compatible With a Range of Data Bus Protocols
- + Coaxial Options Available With RG178 / RG179 Circuits



The ESE Series Ethernet slip ring is a rotating assembly used to transfer power, control circuits or data (analog / digital) from stationary inlets to rotating outlets.

ESE Series slip rings provide 100Base-T or 1000Base-T Ethernet connections with a combination of 2, 5, and 10 amp power connections. Utilizing high performance gold-on-gold contacts, the ESE Series features low electrical noise and Ethernet cables terminated with RJ45 connectors. Standard models are available from 8 to 51 circuits.

SPECIFICATIONS	
Operating Speed (max.)	250 RPM Continuous
Data Speed (max.)	100 Mbps, 1 Gbps
Standard Circuit Options	8, 10, 12, 14, 18, 41, 43, 45, 47, 51
Voltage [AC/DC] (max.)	240
Amps	1, 2, 5, 10
Lead Gauge (AWG)	28, 26, 20, 16
Wire Material	Silver-Plated Copper
Electrical Noise (max.)	60 Milliohms
Contact Material	Gold
Temperature Range	-40 °F to 176 °F (-40 °C to +80 °C)



PRODUCT DOWNLOADS

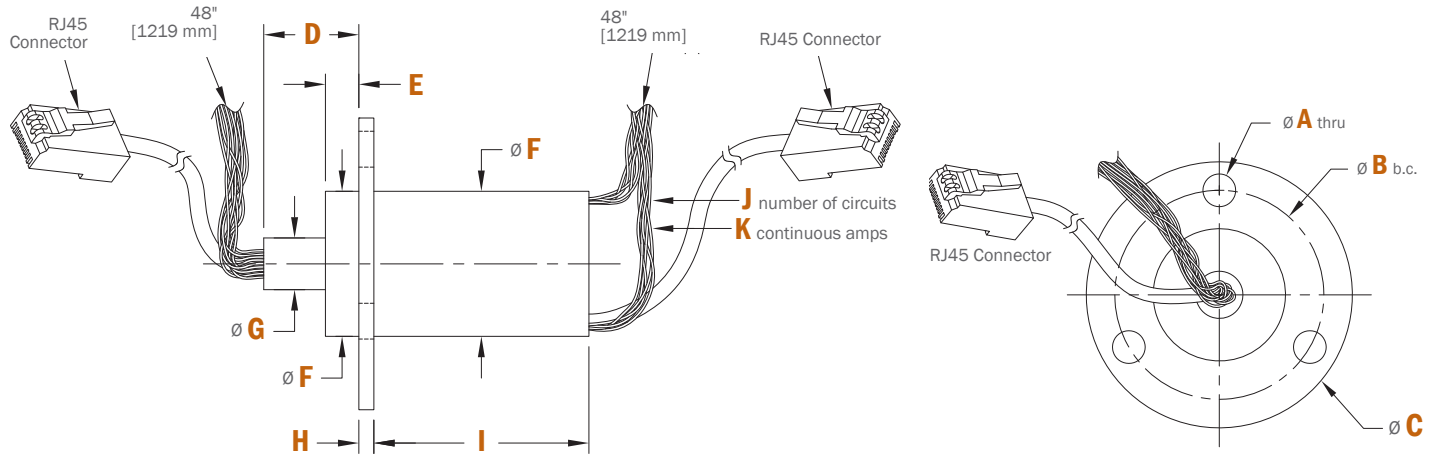
For Catalogs, Brochures, Models and Drawings visit www.dsti.com/downloads



DID YOU KNOW?

DSTI slip rings can be purchased online at store.dsti.com

ESE Series: Dimensions



	ESE64	ESE264	ESE224	ESE2124	ESE284
A	.215" [5.46mm]	.215" [5.46mm]	.215" [5.46mm]	.215" [5.46mm]	.215" [5.46mm]
B	1.375" [34.93mm]	1.375" [34.93mm]	1.375" [34.93mm]	1.375" [34.93mm]	1.375" [34.93mm]
C	1.75" [44.45mm]	1.75" [44.45mm]	1.75" [44.45mm]	1.75" [44.45mm]	1.75" [44.45mm]
D	.57" [14.40mm]	.57" [14.48mm]	.57" [14.48mm]	.57" [14.48mm]	.57" [14.48mm]
E	.25" [6.35mm]	.25" [6.35mm]	.25" [6.35mm]	.25" [6.35mm]	.25" [6.35mm]
F	.87" [22.1mm]	.87" [22.10mm]	.87" [22.10mm]	.87" [22.10mm]	.87" [22.10mm]
G	.31" [7.87mm]	.31" [7.87mm]	.31" [7.87mm]	.31" [7.87mm]	.31" [7.87mm]
H	.09" [2.4mm]	.09" [2.36mm]	.09" [2.36mm]	.09" [2.36mm]	.09" [2.36mm]
I	.75" [19.05mm]	1.02" [25.91mm]	1.02" [25.91mm]	1.29" [32.77mm]	1.29" [32.77mm]
J	10 Circuits	12 Circuits	8 Circuits	18 Circuits	14 Circuits
K	(6x) 2 Amps (1x) 100Base-T*	(2x) 5 Amps (6x) 2 Amps (1x) 100Base-T*	(2x) 10 Amps (2x) 2 Amps (1x) 100Base-T*	(2x) 5 Amps (12x) 2 Amps (1x) 100Base-T*	(2x) 10 Amps (8x) 2 Amps (1x) 100Base-T*

	ESE438	ESE4358	ESE2358	ESE8278	ESE24278
A	.220" [5.58mm]	.220" [5.58mm]	.220" [5.58mm]	.220" [5.58mm]	.220" [5.58mm]
B	1.410" [35.80mm]	1.410" [35.80mm]	1.410" [35.80mm]	1.410" [35.80mm]	1.410" [35.80mm]
C	1.75" [44.45mm]	1.75" [44.45mm]	1.75" [44.45mm]	1.75" [44.45mm]	1.75" [44.45mm]
D	.48" [12.19mm]	.48" [12.19mm]	.48" [12.19mm]	.48" [12.19mm]	.48" [12.19mm]
E	.11" [2.80mm]	.11" [2.80mm]	.11" [2.80mm]	.11" [2.80mm]	.11" [2.80mm]
F	1.00" [25.40mm]	1.00" [25.40mm]	1.00" [25.40mm]	1.00" [25.40mm]	1.00" [25.40mm]
G	.38" [9.52mm]	.38" [9.52mm]	.38" [9.52mm]	.38" [9.52mm]	.38" [9.52mm]
H	.06" [1.9mm]	.06" [1.9mm]	.06" [1.9mm]	.06" [1.9mm]	.06" [1.9mm]
I	2.96" [75.3mm]	2.96" [75.3mm]	2.96" [75.3mm]	2.96" [75.3mm]	2.96" [75.3mm]
J	51 Circuits	47 Circuits	45 Circuits	43 Circuits	41 Circuits
K	(43x) 2 Amps (1x) 1000Base-T*	(4x) 5 Amps (35x) 2 Amps (1x) 1000Base-T*	(2x) 10 Amps (35x) 2 Amps (1x) 1000Base-T*	(8x) 5 Amps (27x) 2 Amps (1x) 1000Base-T*	(2x) 10 Amps (4x) 5 Amps (27x) 2 Amps (1x) 1000Base-T*

*100BaseT & 1000BaseT (28 gauge / twisted pair) Ethernet circuits can also be used for other data/signal types

Wiring Color Codes: ESE Series

See Ethernet Plug Wiring on Page 25

*28 AWG 100_T = 1 amps max signal; CAT 5 Cable

ESE64		
Tag #	Color	Description/Awg
1	ORN	100_T/28/ Twisted Pair
2	WHT-ORN	
3	GRN	100_T/28/ Twisted Pair
4	WHT-GRN	
5	BLK	2A/26
6	BRN	
7	RED	
8	ORN	
9	YEL	
10	GRN	

ESE224		
Tag #	Color	Description/Awg
1	ORN	100_T/28/ Twisted Pair
2	WHT-ORN	
3	GRN	100_T/28/ Twisted Pair
4	WHT-GRN	
5	BLK	10A/16
6	BRN	2A/26
7	RED	
8	ORN	

ESE264		
Tag #	Color	Description/Awg
1	ORN	100_T/28/ Twisted Pair
2	WHT-ORN	
3	GRN	100_T/28/ Twisted Pair
4	WHT-GRN	
5	BLK	5A/20
6	BRN	2A/26
7	BLK	
8	BRN	
9	RED	
10	ORN	
11	YEL	
12	GRN	

ESE284		
Tag #	Color	Description/Awg
1	ORN	100_T/28/ Twisted Pair
2	WHT-ORN	
3	GRN	100_T/28/ Twisted Pair
4	WHT-GRN	
5	BLK	10A/16
6	BRN	
7	BLK	2A/26
8	BRN	
9	RED	
10	ORN	
11	YEL	
12	GRN	
13	BLU	
14	VIO	

ESE2124		
Tag #	Color	Description/Awg
1	ORN	100_T/28/ Twisted Pair
2	WHT-ORN	
3	GRN	100_T/28/ Twisted Pair
4	WHT-GRN	
5	BLK	5A/20
6	BRN	
7	BLK	2A/26
8	BRN	
9	RED	
10	ORN	
11	YEL	
12	GRN	
13	BLU	
14	VIO	
15	GRY	
16	WHT	
17	WHT-BLK	
18	WHT-BRN	

Wiring Color Codes: ESE Series

See Ethernet Plug Wiring on Page 25

*28 AWG 1000_T = 1 amps max signal; CAT 5 Cable

ESE438			
Tag #	Color	Description/Awg	
1	BLK	2A/26	
2	BRN		
3	RED		
4	ORN		
5	YEL		
6	GRN		
7	BLU		
8	VIO		
9	GRY		
10	WHT		
11	WHT-BLK		
12	WHT-BRN		
13	WHT-RED		
14	WHT-ORN		
15	BLK	2A/26	
16	BRN		
17	RED		
18	ORN		
19	YEL		
20	GRN		
21	BLU		
22	VIO		
23	GRY		
24	WHT		
25	WHT-BLK		
26	WHT-BRN		
27	WHT-RED		
28	WHT-ORN		
29	ORN	1000_T/28/ Twisted Pair	2A/26
	WHT-ORN		
	GRN	1000_T/28/ Twisted Pair	
	WHT-GRN		
	BLU	1000_T/28/ Twisted Pair	
	WHT-BLU		
30	BRN	1000_T/28/ Twisted Pair	
	WHT-BRN		
	WHT-ORN		

37	BLK	2A/26
38	BLK	
39	BRN	
40	RED	
41	ORN	
42	YEL	
43	GRN	
44	BLU	
45	VIO	
46	GRY	
47	WHT	
48	WHT-BLK	
49	WHT-BRN	
50	WHT-RED	
51	WHT-ORN	

ESE4358			
Tag #	Color	Description/Awg	
1	BLK	2A/26	
2	BRN		
3	RED		
4	ORN		
5	YEL		
6	GRN		
7	BLU		
8	VIO		
9	GRY		
10	WHT		
11	WHT-BLK		
12	WHT-BRN		
13	WHT-RED		
14	WHT-ORN		
15	BLK	5A/20	
16	BRN		
17	RED		
18	ORN	2A/26	
19	BLK		
20	BRN		
21	RED		
22	ORN		
23	YEL		
24	GRN		
25	ORN	1000_T/28/ Twisted Pair	2A/26
	WHT-ORN		
	GRN	1000_T/28/ Twisted Pair	
	WHT-GRN		
	BLU	1000_T/28/ Twisted Pair	
	WHT-BLU		
26	BRN	1000_T/28/ Twisted Pair	
	WHT-BRN		
	WHT-ORN		

33	BLK	2A/26
34	BLK	
35	BRN	
36	RED	
37	ORN	
38	YEL	
39	GRN	
40	BLU	
41	VIO	
42	GRY	
43	WHT	
44	WHT-BLK	
45	WHT-BRN	
46	WHT-RED	
47	WHT-ORN	

Wiring Color Codes: ESE Series

See Ethernet Plug Wiring on Page 25

*28 AWG 1000_T = 1 amps max signal; CAT 5 Cable

ESE2358			
Tag #	Color	Description/Awg	
1	BLK	2A/26	
2	BRN		
3	RED		
4	ORN		
5	YEL		
6	GRN		
7	BLU		
8	VIO		
9	GRY		
10	WHT		
11	WHT-BLK	10A/16	
12	WHT-BRN		
13	WHT-RED		
14	WHT-ORN		
15	BLK	2A/26	
16	BRN		
17	BLK		
18	BRN		
19	RED		
20	ORN		
21	YEL		
22	GRN		
23	ORN	1000_T/28/ Twisted Pair	2A/26
	WHT-ORN	1000_T/28/ Twisted Pair	
	GRN	1000_T/28/ Twisted Pair	
	WHT-GRN	1000_T/28/ Twisted Pair	
	BLU	1000_T/28/ Twisted Pair	
	WHT-BLU	1000_T/28/ Twisted Pair	
BRN	1000_T/28/ Twisted Pair		
WHT-BRN	1000_T/28/ Twisted Pair		

31	BLK	2A/26
32	BLK	
33	BRN	
34	RED	
35	ORN	
36	YEL	
37	GRN	
38	BLU	
39	VIO	
40	GRY	
41	WHT	
42	WHT-BLK	
43	WHT-BRN	
44	WHT-RED	
45	WHT-ORN	

ESE8278			
Tag #	Color	Description/Awg	
1	BLK	5A/20	
2	BRN		
3	RED		
4	ORN		
5	BLK	2A/26	
6	BRN		
7	RED		
8	ORN		
9	YEL		
10	GRN	5A/20	
11	BLK		
12	BRN		
13	RED		
14	ORN	2A/26	
15	BLK		
16	BRN		
17	RED		
18	ORN		
19	YEL		
20	GRN		
21	ORN	1000_T/28/ Twisted Pair	2A/26
	WHT-ORN	1000_T/28/ Twisted Pair	
	GRN	1000_T/28/ Twisted Pair	
	WHT-GRN	1000_T/28/ Twisted Pair	
	BLU	1000_T/28/ Twisted Pair	
	WHT-BLU	1000_T/28/ Twisted Pair	
BRN	1000_T/28/ Twisted Pair		
WHT-BRN	1000_T/28/ Twisted Pair		

29	BLK	2A/26
30	BLK	
31	BRN	
32	RED	
33	ORN	
34	YEL	
35	GRN	
36	BLU	
37	VIO	
38	GRY	
39	WHT	
40	WHT-BLK	
41	WHT-BRN	
42	WHT-RED	
43	WHT-ORN	



Wiring Color Codes: ESE Series

See Ethernet Plug Wiring on Page 25

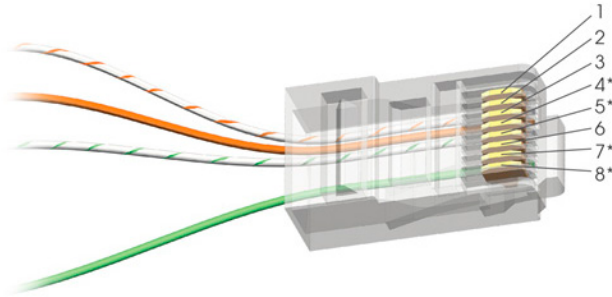
*28 AWG 1000_T = 1 amps max signal; CAT 5 Cable

ESE24278			
Tag #	Color	Description/Awg	
1	BLK	5A/20	
2	BRN		
3	RED		
4	ORN		
5	BLK	2A/26	
6	BRN		
7	RED		
8	ORN		
9	YEL		
10	GRN	10A/16	
11	BLK		
12	BRN	2A/26	
13	BLK		
14	BRN		
15	RED		
16	ORN		
17	YEL		
18	GRN	2A/26	
19	ORN		1000_T/28/ Twisted Pair
	WHT-ORN		1000_T/28/ Twisted Pair
	GRN		1000_T/28/ Twisted Pair
	WHT-GRN		1000_T/28/ Twisted Pair
	BLU		1000_T/28/ Twisted Pair
	WHT-BLU		1000_T/28/ Twisted Pair
	BRN	1000_T/28/ Twisted Pair	
WHT-BRN	1000_T/28/ Twisted Pair		
27	BLK	2A/26	
28	BLK		
29	BRN		
30	RED		
31	ORN		
32	YEL		
33	GRN		
34	BLU		
35	VIO		
36	GRY		
37	WHT		
38	WHT-BLK		
39	WHT-BRN		
40	WHT-RED		
41	WHT-ORN		



Ethernet Plug Wiring: 4-Wire *

Color	Pin #
WHT-ORN	1
ORN	2
WHT-GRN	3
N/A	4
N/A	5
GRN	6
N/A	7
N/A	8



ATTENTION

Ethernet Plug PIN Numbers shown on this page are different than Wire Tag Numbers.

*RJ45 Plug

Ethernet Plug Wiring: 8-Wire *

Color	Pin #
WHT-ORN	1
ORN	2
WHT-GRN	3
BLU	4
WHT-BLU	5
GRN	6
WHT-BRN	7
BRN	8

